

# RUUKKI ADAMANTE



## Technische Daten

**Name:** Adamante (TS55-350-1125)

**Deckbreite:** 1125 mm

**Profilbreite:** 1153 mm

**Profilhöhe:** 55 mm

**Maximale Profillänge:** 8,20 m

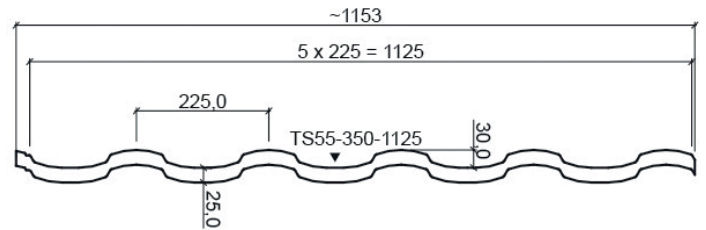
**Minimale Profillänge:** 0,85 m

**Ziegellänge:** 350 mm

**Stahldicke:** 0,50 mm – 4,8 kg/m<sup>2</sup>

**Minstdachneigung:** 9°

**Masse Zink:** 275 g/m<sup>2</sup>



## Farben



**Schwarz**  
RAL 9017 / RR 33



**Anthrazit**  
RAL 7021 / RR 2H3



**Grau**  
RAL 7024 / RR 23



**Braun**  
RAL 6022 / RR32



**Terra-cotta**  
RAL 8004 / RR 750



**Rot**  
RAL 3009 / RR 29



**Schokoladenbraun**  
RAL 8017 / RR 887

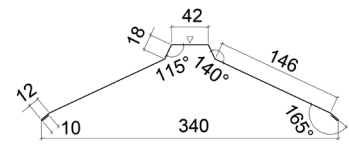
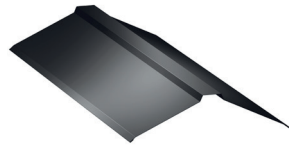
## Beschichtung

<b>Ruukki 50 plus</b>	GreenCoat Pural BT / Pural Matt BT
<b>Ruukki 40</b>	GreenCoat Crown BT
<b>Ruukki 30</b>	Polyester Rough Matt / polyester

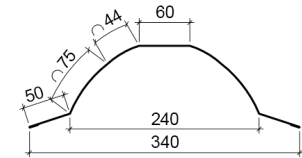
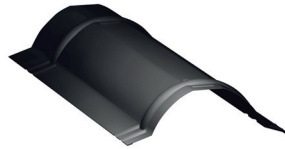
technische Garantie	ästhetische Garantie
50 Jahre	25 Jahre
40 Jahre	15 Jahre
30 Jahre	10 Jahre

# Zubehör

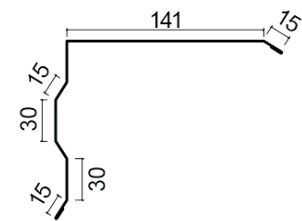
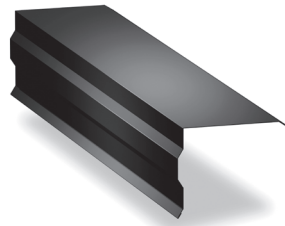
Firstkappe  
2000 mm



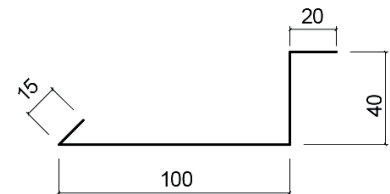
Firstkappe halbrund  
2100 mm



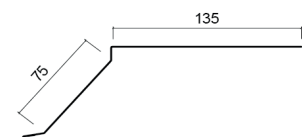
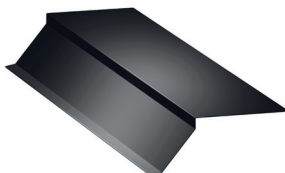
Ortgang  
2000 mm



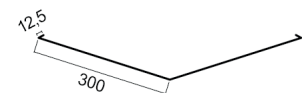
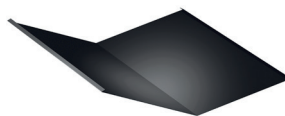
Ortgang unterteil  
2000 mm



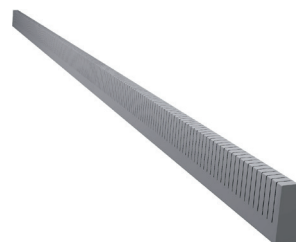
Traufblech  
2000 mm



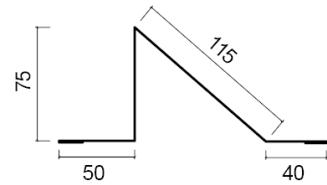
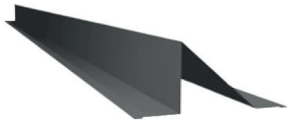
Kehle  
2000 mm



Universale Profildichtung  
Größe max. : 10000 mm



Schneefang Blech  
2000 mm



Schneefangrohr  
2 Stück  
1000 mm oder  
3000 mm



Halter für  
Schneefang



Shneestop



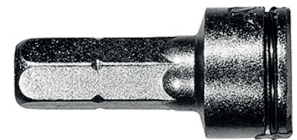
Retouchierfarbe



Lachierte  
Schraube  
• 4,8 x 35mm  
• 4,8 x 20mm



Bit



Solarhalter

