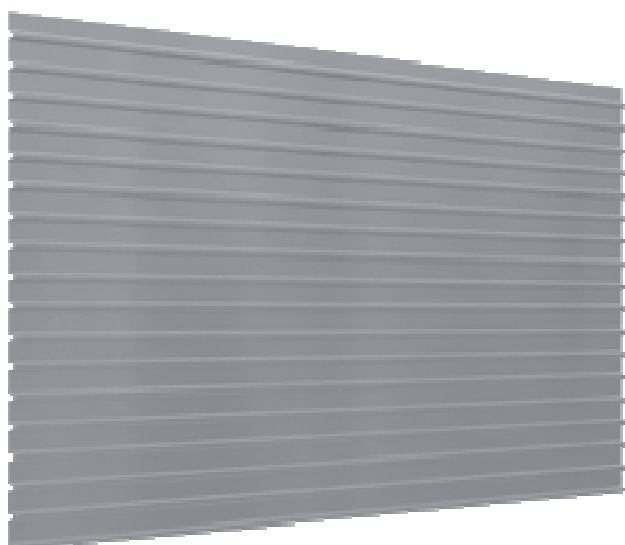
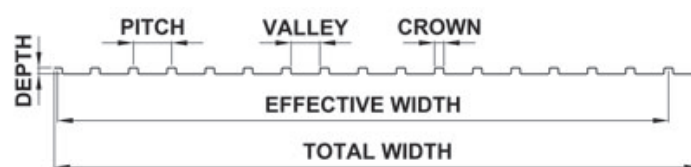
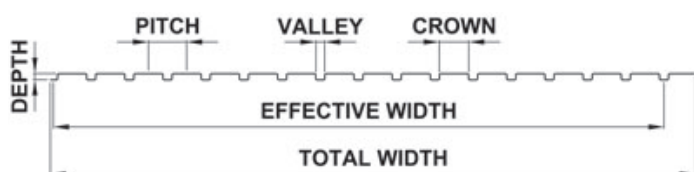
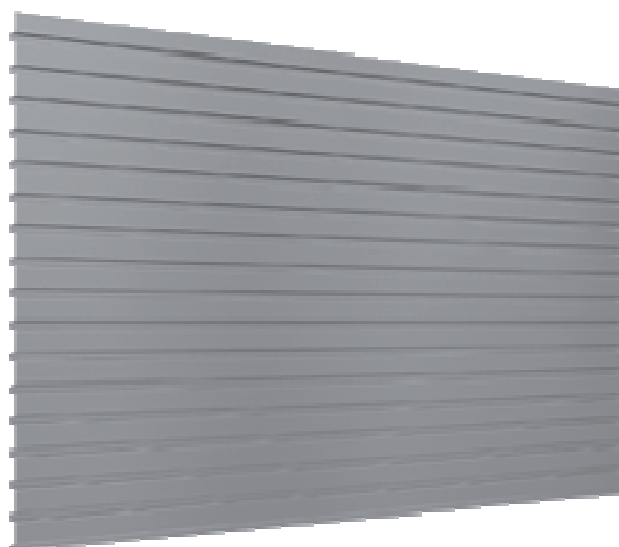


Fixation:	Visible
Largeur totale :	1037mm
Largeur utile :	982mm
Profondeur du panneau :	10 mm
Epaisseur d'acier :	0.60 mm
Revêtements :	PVDF
Couleur :	voir nuancier RUUKKI
Direction de pose :	Horizontale et verticale
Longueur sur mesure:	170 – 3000mm

OULU T10 A



OULU T10 B



imported by

FINN-ROOF Dachsysteme AG
Zur Domäne 23
BE- 4750 Bütgenbach
BELGIUM
Tel. +32 80 446 060, Fax. +32 80 447 165
info@finn-roof.com

www.finn-roof.com

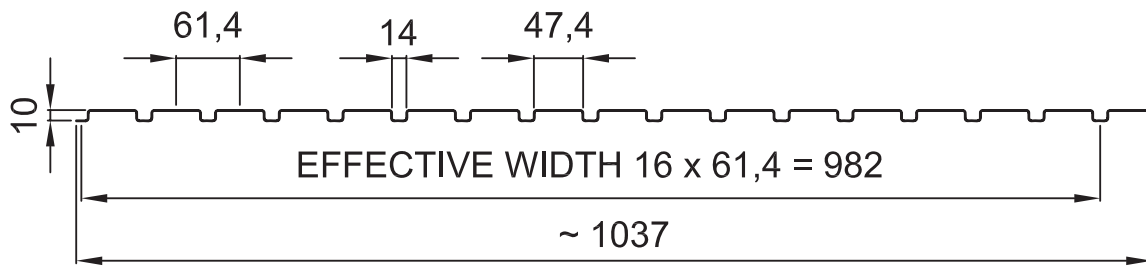


Contents of drawing

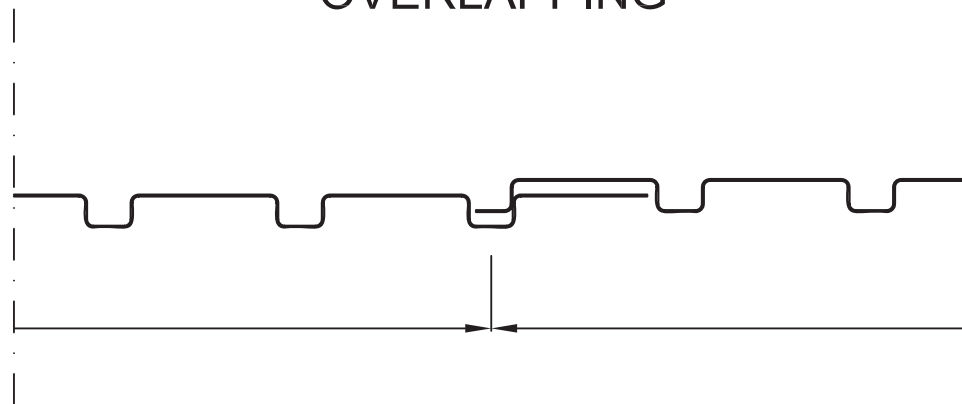
Design Oulu A T10

Dimensional drawing

Date 01.09.2010	Rev. date .	Work nr. .	Drw. nr. DPAT10E	Rev. .
Drawn by Ruukki	Rev. .		File nr. .	
Scale 1:7.5	Building .			



OVERLAPPING



material thickness $t = 0.60$ mm
band width = 1250 mm
length $L = 170 \dots 3000$ mm

Copyright © Rautaruukki Corporation. Allowed only for designs with Ruukki's products