

**RUUKKI  
LIBERTA  
ELEGANT 500**



# Technische eigenschappen

**Naam :** Liberta Elegant 500

**Cassette diepte (c) :** 25, 30 mm

**Horizontale voeg (Dh) :** 5, 10, 15, 20, 25, 30 mm

**Verticale voeg (Dv) :** 5, 10, 15, 20, 25, 30 mm

**Staaldikte :** 1,20 mm – 11,4 kg/m<sup>2</sup>

**Befestiging :** verborgen

**Montage :** horizontaal

**Afmeting optimale :**

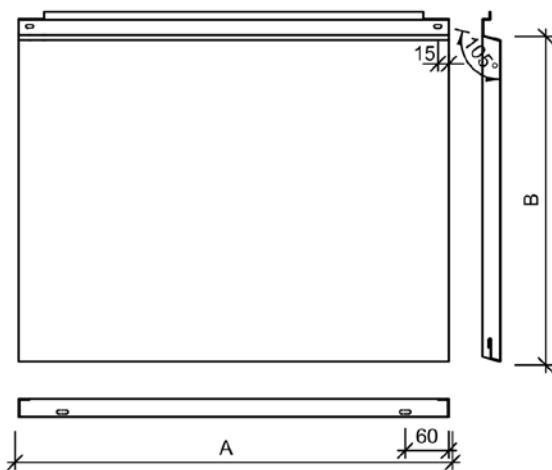
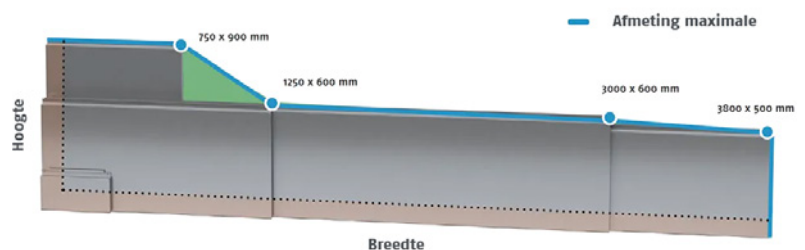
- Breedte :  $\geq 1500$  mm
- Hoogte : 550 tot 600 mm

**Afmeting speciale :**

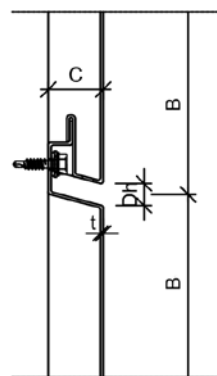
- Breedte : 100 tot 380 mm
- Hoogte : 100 tot 225 mm

**Afmeting minimale :**

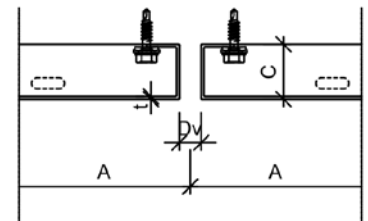
- Breedte : 100 mm
- Hoogte : 100 mm



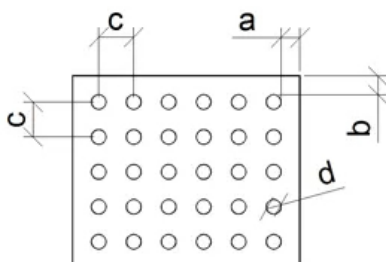
## HORIZONTALE VOEG



## VERTICALE VOEG



## Geperforeerd design



Afmeting van de gaten	mm
a	$\geq 10$
b	$\geq 10$
c	$\geq d+25$
d	16, 20, 30, 40, 50, 60

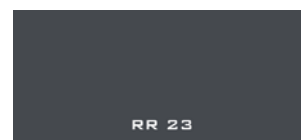
## Kleuren



**Wit**



**Lichtgrijs**



**Grijs**



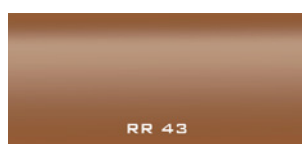
**Mat Silver**



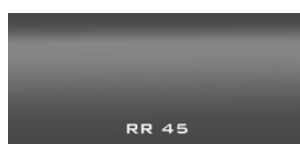
**Donkergrijs**



**Goud**



**Koper**



**Graphite**

## Coating

**GreenCoat HIARC / GreenCoat HIARC Matt**

Technische garantie	Esthetische garantie
50 jaar	25 jaar