

**RUUKKI
MONTERREY F.E.B.**



Technische Specificaties

Naam: Monterrey FEB (TS44-350-1100)

Effectieve breedte: 1100 mm

Totale breedte: 1180 mm

Totale hoogte: 44 mm

Maximale lengte: 8,20 m

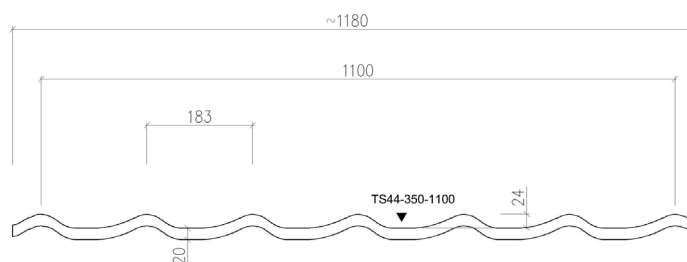
Minimale lengte: 0,75 m

Panlengte: 350 mm

Staaldikte: 0,50 mm - 4,7 kg/m²

Minimale helling: 8°

Zinkmassa: 275 g/m²



Kleuren



Zwart
RAL 9017 / RR 33



Antraciet
RAL 7021 / RR 2H3



Grijs
RAL 7024 / RR 23



Bruin
RAL 6022 / RR 32



Chocoladebruin
RAL 8017 / RR 887



Rod
RAL 3009 / RR 29

Coating

Ruukki 40

GreenCoat Crown BT

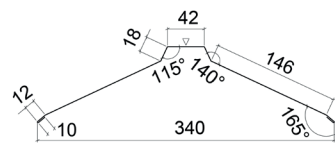
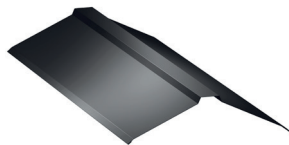
Ruukki 30

Polyester Rough Matt / Polyester

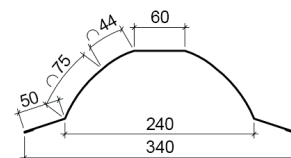
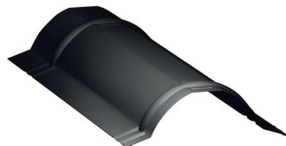
Technische garantie	Esthetische garantie
40 Jaar	15 Jaar
30 Jaar	10 Jaar

Toebehoren

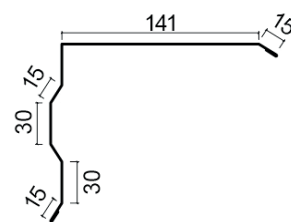
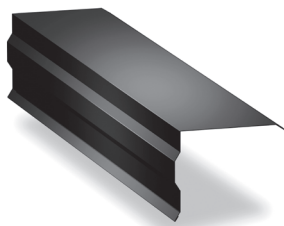
Vlakke nok
2000 mm



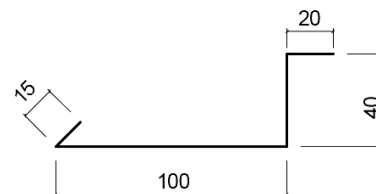
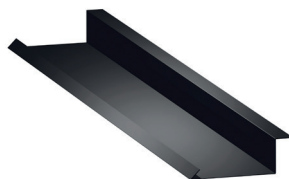
Ronde nok
2100 mm



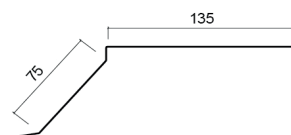
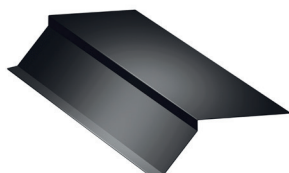
Zijkant
2000 mm



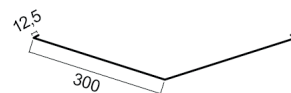
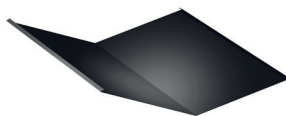
Zijkant subdeel
2000 mm



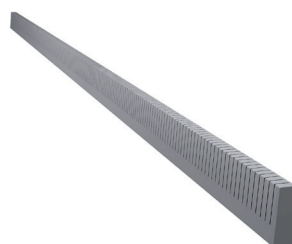
Gootslab
2000 mm



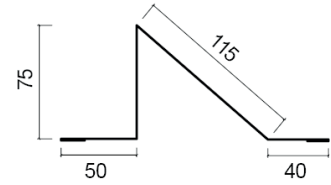
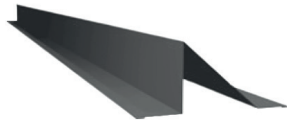
Kilgoot
2000 mm



Universal dichtingsbanden
max. : 10000 mm



Sneeuwvanger
2000 mm



Sneeuwvanger
buis
2 stuks
1000 mm of
3000 mm



Houder voor
sneeuwvanger buis



Sneeuwstop

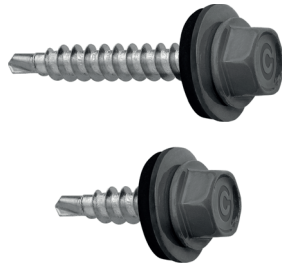


Retoucheverf

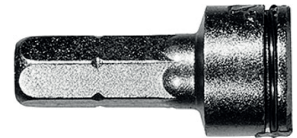


Gelakte schroef

- 4,8 x 35mm
- 4,8 x 20mm



Bit



Solarhouders

