

# RUUKKI FRIGGE



## Caractéristiques techniques

**Nom :** Frigge (TS41-350-1185)

**Largeur utile :** 1185 mm

**Largeur totale :** 1213 mm

**Hauteur :** 41 mm

**Longueur utile :** 660 mm

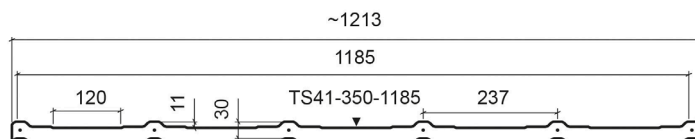
**Longueur totale :** 725 mm

**Longueur de tuile :** 350 mm

**Épaisseur d'acier :** 0,50 mm

**Pente minimale :** 14°

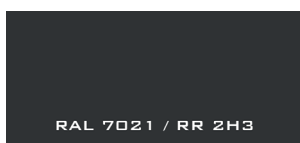
**Masse de zinc :** 275 g/m<sup>2</sup>



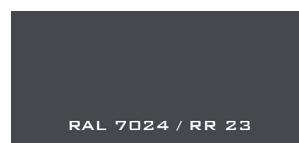
## Couleurs



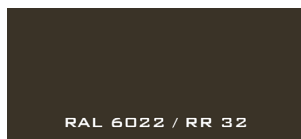
**Noir**



**Anthracite**



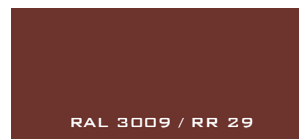
**Gris**



**Brun**



**Terra-cotta**



**Rouge**



**Brun chocolat**

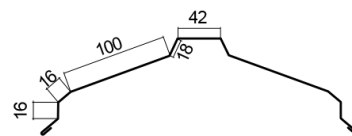
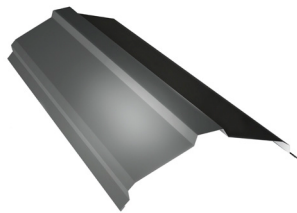
## Revêtements

<b>Ruukki 50 plus</b>	GreenCoat Pural BT / Pural Matt BT
<b>Ruukki 40</b>	GreenCoat Crown BT
<b>Ruukki 30</b>	Polyester Rough Matt /Polyester

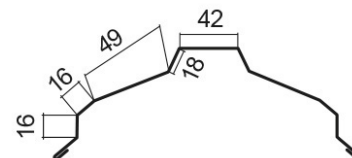
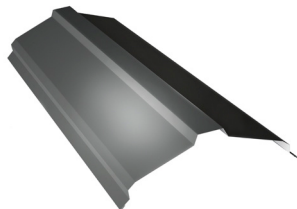
Garantie technique	Garantie esthétique
50 ans	25 ans
40 ans	15 ans
30 ans	10 ans

# Accessoires

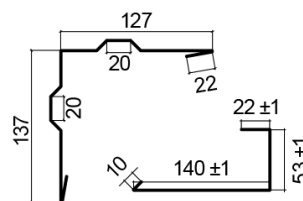
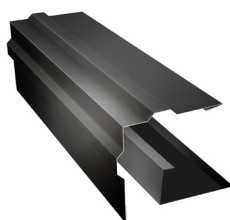
Faîtière  
2000 mm



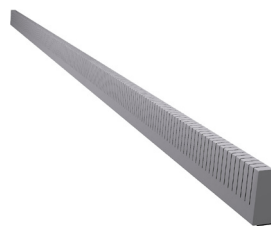
Faîtière  
(petite)  
2000 mm



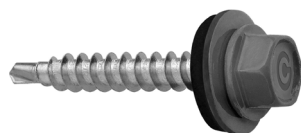
Rive  
2000 mm



Joint universel  
taille max. : 10000 mm



Vis de couturage  
4,8 x 35mm



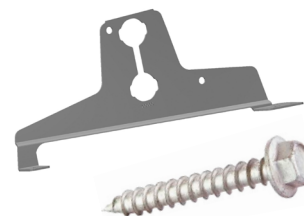
Vis de couturage  
4,8 x 20mm



barrière à neige  
2 pièces  
1000 mm ou  
3000 mm



Kit de fixation pour  
barrière à neige :  
2x consoles,  
2x joints,  
6x vis 7x50 mm



Stop neige



Kit de fixation pour  
panneaux solaires

