

**RUUKKI
FINNERA**



Caractéristiques techniques

Nom : Finnera (TS52-330-1140)

Largeur utile : 1140 mm

Largeur totale : 1190 mm

Hauteur : 52 mm

Longueur utile : 660 mm

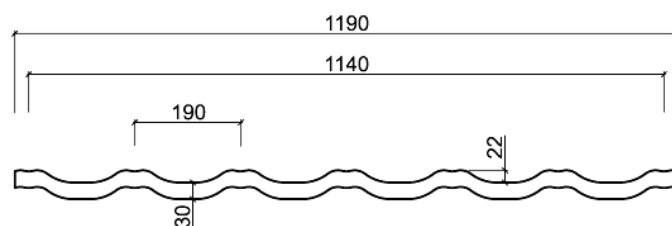
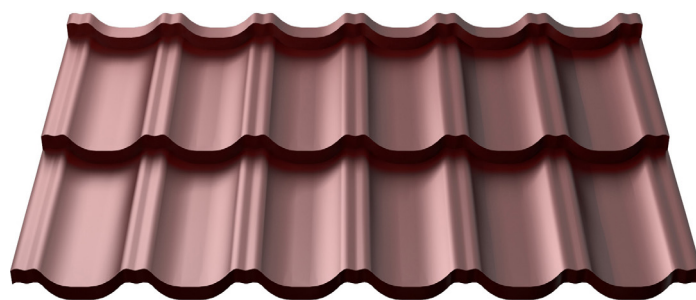
Longueur totale : 705 mm

Longueur de tuile : 330 mm

Épaisseur d'acier : 0,50 mm – 5 kg/m²

Pente minimale : 9°

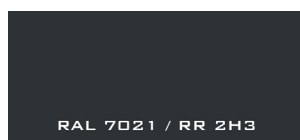
Masse de zinc : 275 g/m²



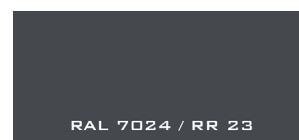
Couleurs



Noir



Anthracite



Gris



Gris Clair



Brun



Terra-cotta



Rouge



Brun chocolat

Revêtements

Ruukki 50 plus GreenCoat Pural BT / Pural Matt BT
Ruukki 40 GreenCoat Crown BT

Garantie technique	Garantie esthétique
50 ans	25 ans
40 ans	15 ans

Anti-condensation

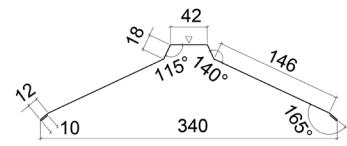
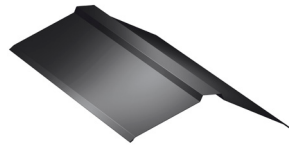
Feutre anti-condensation collé sur la face intérieure.

Revêtement : 110 g/m²

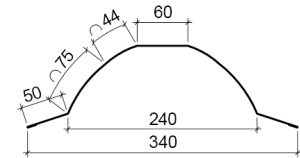
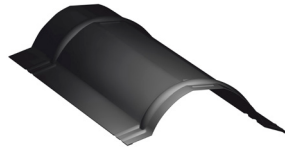
Capacité d'absorption d'eau : > 600 g/m²

Accessoires

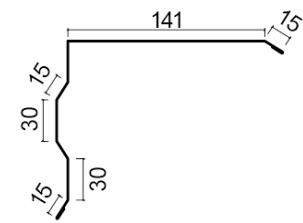
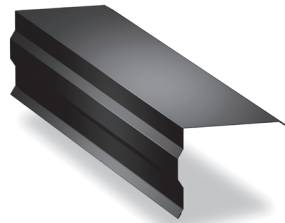
Faîtière
2000 mm



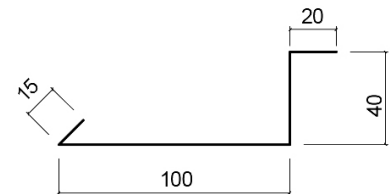
Faîtière ronde
2100 mm



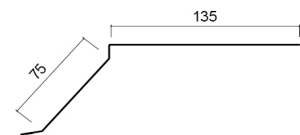
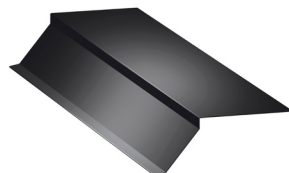
Rive
2000 mm



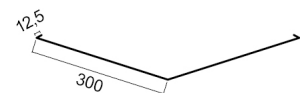
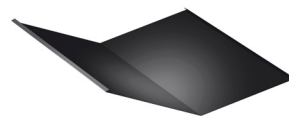
Sous-rive
2000 mm



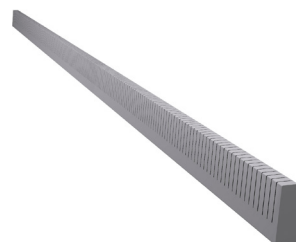
Bavette
2000 mm



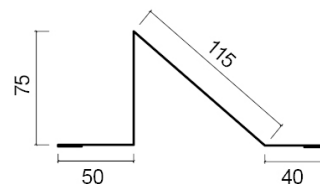
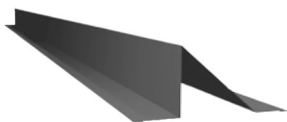
Noue
2000 mm



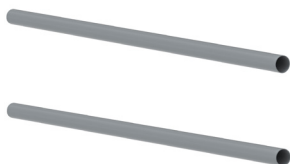
Joint universel
taille max. : 10000 mm



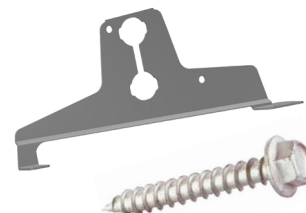
Barrière à neige
2000 mm



Tube barrière
à neige
2 pièces
1000 mm ou
3000 mm



Kit de fixation pour
tube barrière à neige :
2x consoles,
2x joints,
6x vis 7x50 mm



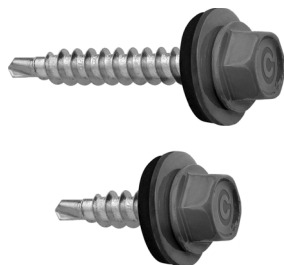
Stop neige



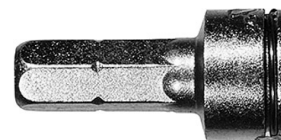
Couleur
de retouche



Vis de couturage
• 4,8 x 35mm
• 4,8 x 20mm



Embout



Kit de fixation pour
panneaux solaires

