

# RUUKKI MONTERREY



## Caractéristiques techniques

**Nom :** Monterrey FEB (TS39-350-1100)

**Largeur utile :** 1100 mm

**Largeur totale :** 1180 mm

**Hauteur :** 39 mm

**Longueur maximale :** 8,20 m

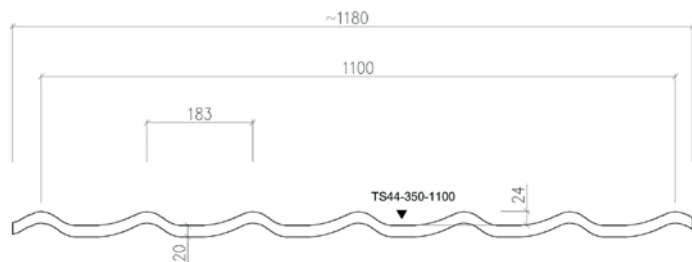
**Longueur minimale :** 0,85 m

**Longueur de tuile :** 350 mm

**Épaisseur d'acier :** 0,50 mm - 4,7 kg/m<sup>2</sup>

**Pente minimale :** 9°

**Masse de zinc :** 275 g/m<sup>2</sup>



## Couleurs



**Noir**  
RAL 9017 / RR 33



**Anthracite**  
RAL 7021 / RR 2H3



**Gris**  
RAL 7024 / RR 23



**Brun**  
RAL 6022 / RR 32



**Brun chocolat**  
RAL 8017 / RR 887



**Rouge**  
RAL 3009 / RR 29



**Terra-Cotta**  
RAL 8004 / RR 750

## Revêtements

**Ruukki 50 plus**

GreenCoat Pural BT Matt

**Ruukki 40**

GreenCoat Crown BT / Polyester Rough Matt

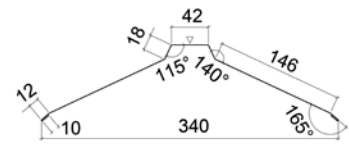
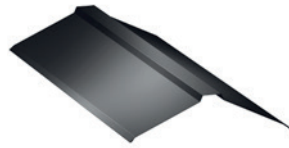
**Ruukki 30**

Polyester

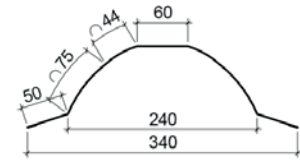
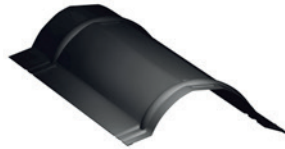
Garantie technique	Garantie esthétique
50 ans	25 ans
40 ans	15 ans
30 ans	10 ans

# Accessoires

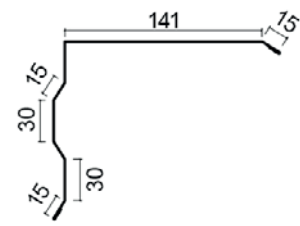
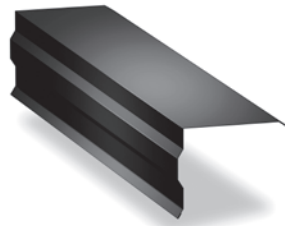
Faîtière  
2000 mm



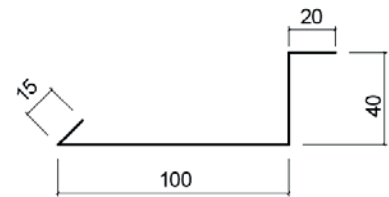
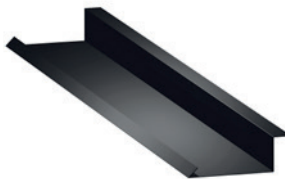
Faîtière ronde  
2100 mm



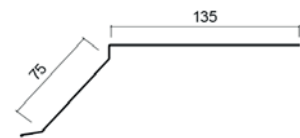
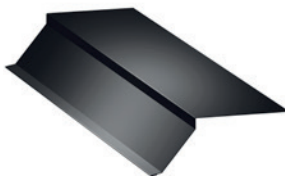
Rive  
2000 mm



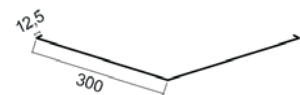
Sous-rive  
2000 mm



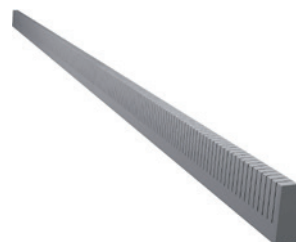
Bavette  
2000 mm



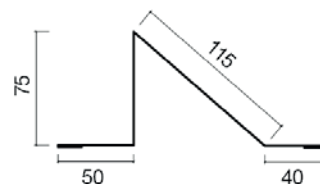
Noe  
2000 mm



Joint universel  
taille max. : 10000 mm



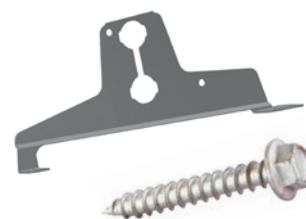
Barrière à neige  
2000 mm



Tube barrière  
à neige  
2 pièces  
1000 mm ou  
3000 mm



Kit de fixation pour  
tube barrière à neige :  
2x consoles,  
2x joints,  
6x vis 7x50 mm



Stop neige



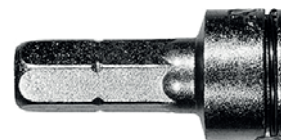
Couleur  
de retouche



Vis de couturage  
• 4,8 x 35mm  
• 4,8 x 20mm



Embout



Kit de fixation pour  
panneaux solaires

